

# THE BEGINNING OF A NEW ERA



High Performance Image Processing  
Cost-Optimized Sensors

ELTEC

systems

# THE BEGINNING OF A NEW ERA

## Image Processing Puts Wind in the Sails

- PCI Express interface technology, COM Express CPU module
- Embedded High-Performance Computing
- Multi-channel framegrabber with
  - 3 to 4 GB bus transfer rate into the locale RAM,
  - 1 to 2 GB continuous transfer rate on PCI Express Bus
- Mega-pixel camera technology with LVDS transmission network
- Unbeatable cost level

### Image Processing

Embedded image processing solutions with batch character provide the basis that optimizes the benefits of the latest components for your applications.

Components and engineering by **ELTEC** – your staff and our sales, development and application experts. They all collaborate for the success of your business and the achievement of your goals.

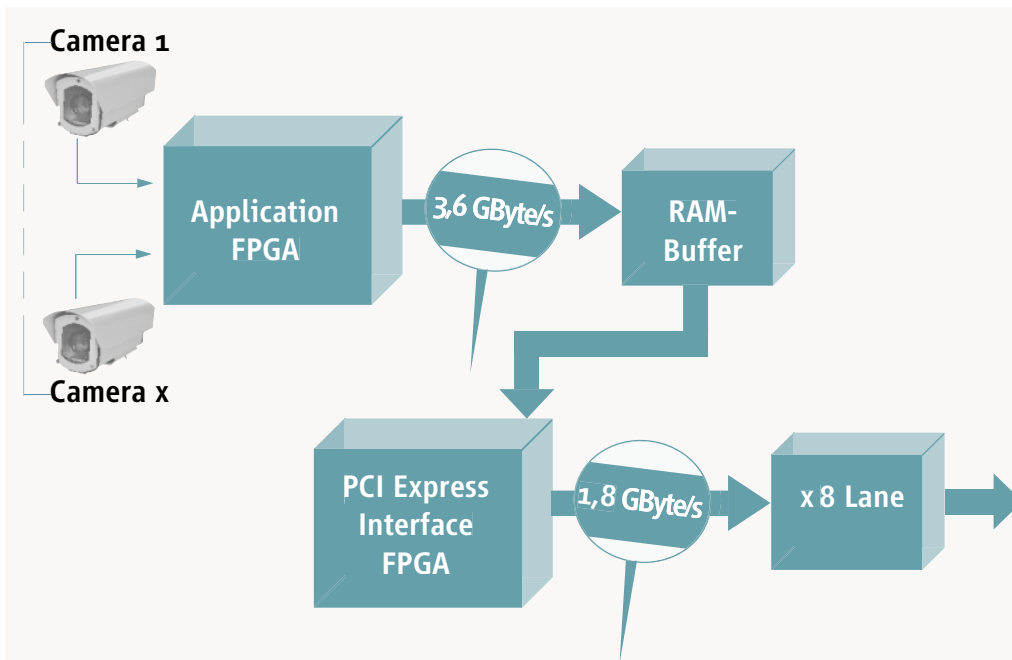
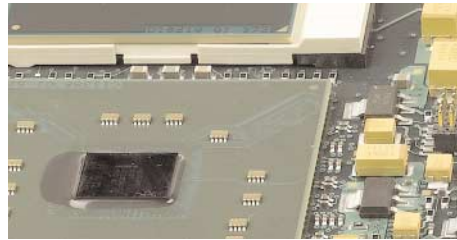
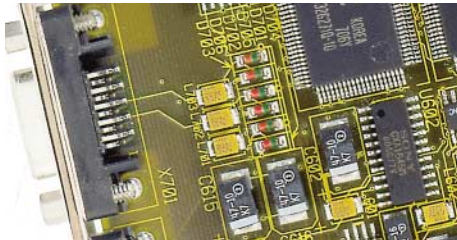


# THE BEGINNING OF A NEW ERA

Framegrabber

CPU Modules

Cameras



## Framegrabber

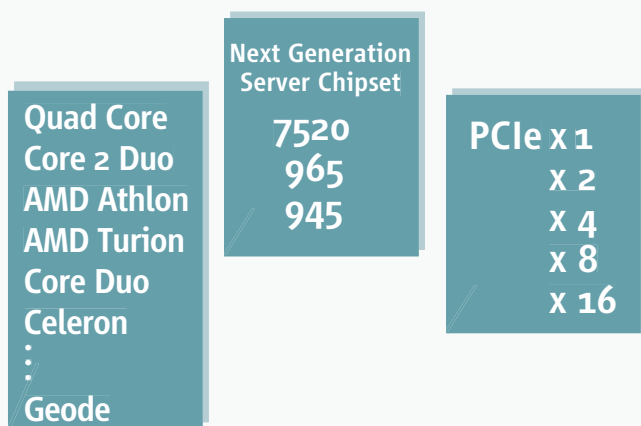
Four bundled LVDS channels allocated to each camera interface transfer up to 250 MB image data.

The consolidation of LVDS channels makes the utilization of multi-tap sensors absolutely problem-free. The variable structures in the ELTEC framegrabber application FPGA support this process in a simple way that is transparent for your application software. Buffer-RAMs on the framegrabber ensure that large volumes of image data, i.e. between 3 and 4 GB, are accepted from your application for a short time and transported to the connected CPU module for analysis via the PCI express interface, at a net speed of 1.8 GB.

## CPU Modules

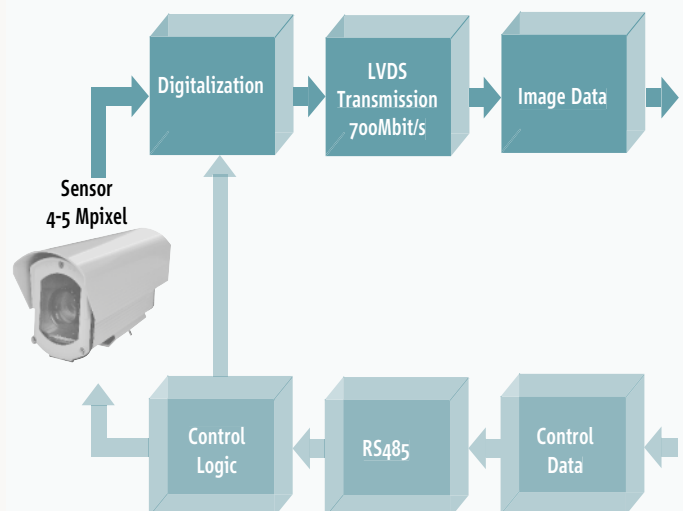
Intel CPUs and chip sets from our embedded line will give you the peace of mind to know that both – your products and your customers – are secure: from new product rollout to handling a service call in 10 years.

The Dual Core, Core 2 Duo, 945, 965 and 7520 chip sets are the fundamental building blocks required for moderate to high performance COM Express CPU module ranges that generate performance bandwidth values that can be handled in the embedded environment bandwidth of the I/O coupling ranges from x1 lanes to x16 lanes, i.e. it covers values from 120 MB to more than 2 GB and, consequently, the requirements of your small and large solutions.



## Cameras

CameraLink, Firewire, ... standards you use with eltec components. If you want to have maximum volume at minimum cost, choose our LVDS mega-pixel technology. Small mechanics, mini electronics, 4 to 5 mega-pixel sensors, high data rates and up to 200 frames/s – the ingredients of our low-cost recipe. Our application engineers will guide you through the jungle of details. We are at your service for quick decisions.



**DEUTSCHLAND**

**ELTEC Elektronik AG**

Galileo-Galilei-Str. 11  
55129 Mainz  
Postfach 10 03 64  
55134 Mainz

Fon +49 6131 918 100  
Fax +49 6131 918 195  
E-Mail [info@eltec.de](mailto:info@eltec.de)  
www [eltec.de](http://eltec.de)

**FRANCE**

**ELTEC International SARL**

1, Allée des Garays  
91872 Palaiseau

Fon +33 1 64 47 18 77  
Fax +33 1 64 47 09 33  
E-Mail [info.fr@eltec-france.fr](mailto:info.fr@eltec-france.fr)  
www [eltec-france.fr](http://eltec-france.fr)

**GREAT BRITAIN**

**ELTEC International PLC**

Unit 32  
Stratford Office Village  
Wolverton Mill  
Milton Keynes MK12 5NS

Fon +44 1908 32 00 55  
Fax +44 1908 31 01 07  
E-Mail [info.uk@eltec.com](mailto:info.uk@eltec.com)  
www [eltec.com](http://eltec.com)

**USA**

**American ELTEC, Inc.**

2401 Windjammer Way  
Las Vegas, Nevada 89107

Fon +1 702 8 78 40 85  
Fax +1 702 8 78 47 35  
E-Mail [info.us@americaneltec.com](mailto:info.us@americaneltec.com)  
www [americaneltec.com](http://americaneltec.com)

Status: 1A | Date: 22.06.07 | Name: The Beginning Of A New Era